

The New Caledonia Weekly

22 - 29 Aug. 2008 - #14



Celebrating coffee

Ponérihouen's colourful 'Yam and Coffee Fair' is a perfect opportunity to sample some of New Caledonia's best home-grown coffees and explore the glorious countryside.

Ponérihouen, which means 'river mouth', lies on New Caledonia's east coast, 4 hours drive from Noumea. Set in lush green countryside, Ponérihouen is traditionally a farming and forestry community... and also the centre of New Caledonia's coffee growing industry. Every year, the village holds a 'Yam and Coffee Fair' to showcase the locally grown speciality coffees. Noumeans flock to the Fair to check out the stalls selling local produce and arts and crafts, and to take part in the workshops on sewing, sculpture, etc. Join a 'coffee tour' and explore the local plantations and the surrounding countryside before finishing up with a coffee tasting session at the Poindimié coffee roasting plant. Tours leave on Saturday at 1 p.m. and Sunday at 9 p.m. Or try the kayak trip scheduled to leave on Saturday at 9.30 a.m. and round off the morning at the 12.30 bougna tasting event (traditional Kanak recipe).

Sat. and Sun. 8.30 a.m. to 10 p.m. Ponérihouen Townhall, tel. 42 85 02, Tourism Office, tel. 05 75 80 (free phone)



International Marathon - go for it!



A superb seaview route, enthusiastic crowds and world-class runners... For the last 25 years, the New Caledonia International Marathon has been a resounding success. The 26th Marathon takes place on Sunday 24 August.

The New Caledonia International Marathon was founded in 1983, in collaboration with the Japanese town of Tachikawa (in the Tokyo suburbs), and has developed over the years into a key New Caledonian sporting calendar event. An ever-growing band of regulars return year after year to take part in the race, which also attracts an increasing number of

world-class runners, who come from Europe, Africa, the South Pacific countries and islands and Japan to take part in this prestigious sporting event.

A delightful setting

A dozen Japanese and Australian runners will be competing in this year's marathon, invited by the COMINC (New Caledonia International Marathon Organising Committee), 'not to mention the tourists who register for the race when they arrive in New Caledonia', commented Committee President Bruno Dumet. 'Indeed, last year's winner was a Japanese tourist.' The marathon's popular success is not surprising, with its delightful lagoon-side setting enlivened by a colourful cheering crowd and

plenty of sideshows, music and dancing. And although some of the competitors have serious athletic aims in mind, they all unite in saying how much they enjoy taking part in the race. The marathon will set off on Sunday 24 August at 7 a.m. and covers a distance of 42 km. The 100 to 130 competitors will run two return laps of the route between Baie des Citrons and the Prony roundabout (a few metres from Magenta beach).

5 km Fun Race

A semi-marathon will also be held, with around 500 people competing, and the popular "Fun Race" will

The New Caledonia Weekly on the Net every Friday

www.office-tourisme.nc

www.newcaledonia.com.au

www.newcaledonia.co.nz

Contents

P2

Arts and culture
Anis Deligny

P2

Wining and Dining
Le Bed

P4

Experience
A milkshake from heaven



take place mid-morning. This friendly family race for individual and team competitors (men, women and children aged 14 and over) run over a distance of 5 km between Henry Milliard Racetrack and Baie des Citrons, has proved to be a great favourite.

- Noumea International Marathon (42 km). Departs 7 a.m.

- Semi-marathon (21 km). Departs 7 a.m.

- Fun Race (5 km). Departs 9.30 a.m.

Tel. 28 10 57

From Anse Vata to Paris,
We to Auckland,
Sydney to Poindimie, and
from Goro to Brisbane...

Every week,
10 000 people
read
The New Caledonia
Weekly

Planete Weekly



Hot Picks

Move it

Nature reserves and visitor areas

11,680 acres of land in the Southern Province are protected by nature parks or reserves.

The stakes are high. How to make New Caledonia's exceptional environmental heritage accessible to tourists, whilst protecting it at the same time? The most sensitive area within these sanctuaries for New Caledonian flora and fauna is closed to the public (Réserve Intégrale de la Montagne des Sources). Other sites such as the Chutes de la Madeleine and the Bois du Sud have been developed to make visitors welcome while safeguarding the environment.

The Chutes de la Madeleine Reserve extends over 990 acres. It is a treasure house of plant life with 168 species and an endemic species rate of 95%. Seven species of primitive conifer from the Mesozoic era grow along the riverside, while underwater, a unique association of plants provides a habitat for the Nesogalaxious fish, a genuine living fossil from Gondwanaland.

A fragile environment

This site was damaged as a result of too much human activity and has been restored by the South Province authorities. More than 10,000 endemic plant species

have been planted and, since 1998, visitors may only walk around the site and may not stop to picnic or camp. This measure has helped to protect the site and visitors are still free to picnic, camp or swim 2 km from the Chutes de la Madeleine, at the site in Netcha which is equipped with all amenities.

Réserve des Chutes de la Madeleine. Open daily from 8 a.m. to 5 p.m. Entry: children free, adults 400F, reduced rate 200F.

Tel 95 94 41

Site de loisirs de Netcha, open 24/24, admissions from 8 a.m. to 5 p.m.

Tel. 46 92 47



Arts & culture

Anis Deligny

'Instants de vie, sculptures d'émotions' is an exhibition of magnificent sculptures in wood by talented artist Anis Deligny.

Anis Deligny was just 8 years old when she first discovered and fell in love with New Caledonia and since then she has never been able to stay away for long. She has always been fascinated by wood as a means of expression and when she was 26, she embarked on a two year journey of discovery, travelling around the world. On returning to Noumea with a wealth of new knowledge and experience, she opened a workshop which has won high repute: *l'Oeil et la Main (Eye and Hand)*.

Anis speaks of wood with passionate intensity. In her exhibition *'Instants de vie, sculptures d'émotions'* (moments of life, sculptures of feeling) she captures and expresses many fleeting emotions, love, tenderness, anger, hesitation...

For the love of wood

'We are forever creating and recreating our lives. I wanted to give expression, through the medium of wood, to all the vivid snatches of life which people create through their attitudes, their expressions and their feelings.'

exhibition and sale of works, until 9 September, Centre d'Art, every day 11 a.m.

to 1 p.m. and 4 p.m. to 6 p.m. Tel. 95 66 50



Photo: Anis Deligny

Wining & Dining

Le Bed

Bed supperbars: the concept was created in Amsterdam, developed in Bangkok and taken even further in Noumea...

There are currently a dozen Bed bars in the world's hottest clubbing cities and when Le Bed arrived in Noumea a year ago, the city joined the world Bed Club. If you're into designer comfort and ultra cool atmosphere, you'll love Le Bed. White is the key note, with white sofas and tables and serving staff dressed in white. In the evening, the bar is bathed in a subtle play of soft lighting. A cool lounge atmosphere reigns until 11 p.m. when the bar becomes a night club. The bar is also open in the afternoon and serves a selection of pastries and exotic fresh fruit juices. Drop in and relax

on one of the inviting sofas while you sip a refreshing drink.

Le Bed is open 4 p.m. to 3 a.m. weekdays and until 4 a.m. at weekends. It is located in the trendy Baie de Citrons, where the local hip crowd comes to chill out in the many bars, restaurants, night clubs and concert venues.

Tel. 26 37 63

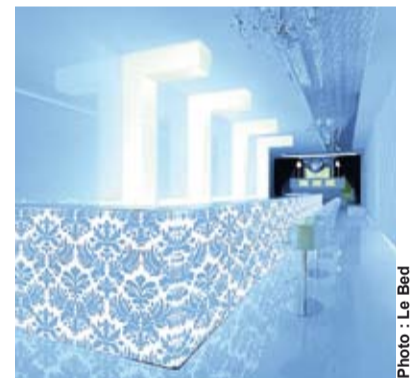


Photo: Le Bed

Shopping

Lifou comes to Noumea

Every Thursday, Downtown Noumea Association organises a festive theme or regional evening at Place des Cocotiers.

This week is your chance to get away from it all for a few hours and explore the heady delights of beautiful Lifou. The theme for the evening is 'cooking and recipes: past, present and future', so you'll be able to sample specialities made with Mou snails, bark, and Kanak spinach together with local bognas (the traditional Kanak dish, a delicious stew wrapped in

a banana leaf and slow-cooked in the ground) made with farm-bred chickens, traditional bread and, of course, Lifou's famous vanilla, recognised worldwide for its unique flavour.

Festive atmosphere

There will also be plenty of stalls displaying superbly crafted items made by local craftsmen and women, including woven articles and sculptures. A fashion parade is scheduled for 6.10 p.m. at the bandstand and Place des Cocotiers will resound to the bewitching beat of songs, tales and dances performed by musicians and dancers from the little island of Tiga, a close neighbour of Lifou, who will be in Noumea especially for the event.

Place des Cocotiers 5 p.m. to 8 p.m. Downtown Noumea, tel. 28 02 07



Photo: Jeudis du Centre-Ville

Where to stay

Parc Hotels Complex

Ideally located opposite the magnificent Anse Vata beach, the complex includes three hotels built around a luxurious 3,000 m² swimming pool. The perfect place for rest and relaxation in a tropical atmosphere. The Parc Hotels Complex offers guests over 300, 2 star, 3 star and 4 star luxury rooms, in the three hotel wings, 'le Pacifique', 'le Nouvata' and 'le Parc'. The poolside 'Le Parc' restaurant serves exquisite French cuisine. It also offers a regular Friday theme evening featuring a scrumptious seafood buffet and a Tahitian dance and music show.

Nearby, you will find a wide range of shops, restaurants and tourist sights. Night owls will only need to stroll a short distance to visit the lively bars and night clubs in Baie des Citrons, just round the corner.

resa@nchotels.nc, www.nchotels.nc, Tel. 26 22 00

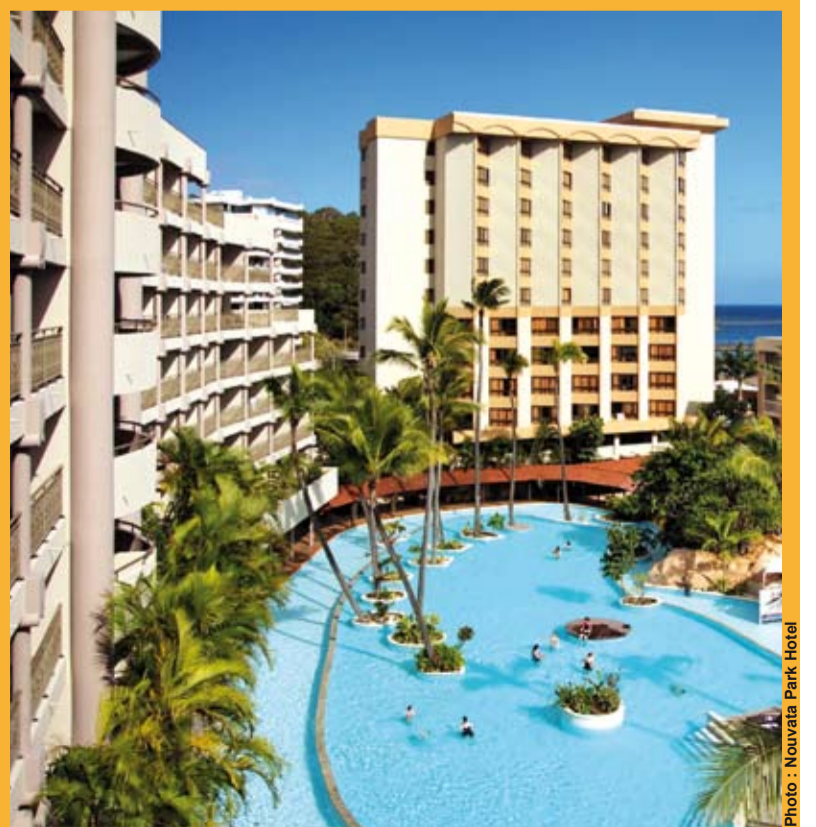


Photo: Nouvata Park Hotel

What's up?

This week 22 August to 28 August

Noumea

Fri. 22 August

Theme evening

Traditional music and dance show with seafood buffet at Le Surf hotel restaurant, from 7 p.m. F6,200.

Tel. 28 05 05

Theme evening

Tahitian show and seafood buffet at Parc Hotels Complex from 7 p.m., F6,900.

Tel. 26 22 00

Fri. 22 and Sat. 23 August
Dance

'Popinées' by R. Digoué traces the story of Kanak women through the history of the Mother Hubbard dress, Museum of New Caledonia 6 p.m. to 9 p.m. Adults: F600, over 60s: F450, children, F300

Tel. 27 23 42

Dance



'Crescendo', a two part show: act 1 features the ballet 'Cinderella' and act 2 opens with some theatrical sketches followed by an hour of modern dance. FOL 22 August, 8 p.m. and 23 August, 2.30 p.m. and 8 p.m., F1,800. Tel. 27 21 40

Fri. 22, Sat. 23 and Sun. 24 August
Concert

Acoustic music concert 'Jimmy Oedin Live' - an intimate acoustic journey to the heart of his world of music and poetry. Théâtre de poche, 22, 8 p.m. and 23 & 24, 6 p.m., F2,000. Tel. 25 07 50

Fri. 22 to Weds. 27 August
Market

Tahitian arts and crafts market with stalls selling pearls, sarongs, woven items, mother-of-pearl, sculptures... Parc Hotels Complex Tel. 26 22 00

Sat. 23 August
Free concert

Big concert event: 'If there is no you, there is no me' to celebrate the 20th anniversary of the Matignon political agreement. Two simultaneous live

performance venues featuring a wide range of bands, musicians and musical styles, rock, soul, kaneka, gospel, dub, reggae... Tjibaou Cultural Centre 10 a.m. to 11 p.m. Entrance free. Tel. 41 45 45



Thu. 28 and Fri. 29 August
Concert

'Trio Sud' with brilliant French guitarist Sylvain Luc. Noumea Conservatory of Music 8 p.m. F3,300 full rate and F1,700 for under 18s. Tickets on sale at the shop 'La clé de Sol', downtown. Tel. 24 63 15

Till Sat. 13 September
Exhibition

Exhibition of wooden sculptures and paintings by artists Jean-Luc Poanoui and Adrien Poindipenda at the North Province Building, Mon. to Fri., 9 a.m. to 6 p.m. and Sat. 9 a.m. to midday, entrance free. Tel. 27 78 05

Art

Downtown Noumea and the Latin Quarter transformed into a vast art gallery. 30 artists showing work in 43 exhibition spaces. Tel. 28 02 07

Till 12 October
Exhibition

'Latitudes : Terres du monde' arts event promote works created by contemporary artists from all France's overseas departments and territories, Tjibaou Cultural Centre, Komwi and Kavitaru Rooms. Tel. 41 45 45

Till the end of the year
Exhibition

'Sous les lagons, le récif', exhibition dedicated to coral reefs, one of the world's most precious natural heritages. Noumea Aquarium, Tue. to Sun. 10 a.m. to 5 p.m. and Fri. until 9 p.m. Feed the fish at 1 p.m. Meet the turtles on Weds. at 3.30 p.m. Tel. 26 27 31

Till 15 February
Exhibition

'A l'abordage' is an exhibition with a piratical theme, jointly organised by several New Caledonian cultural bodies: The

Bernheim Library courtyard is the backdrop for the prow of a pirate ship and the Maritime History Museum is hosting an exhibition tracing the history of pirates and privateers. Tue. to Sun. 10 a.m. to 5 p.m. Tel. 26 34 43 / 28 68 21

South Province

Sat. 23 August
Horseracing

South Province Territorial Grand Prix and 20 years Harness Racing for Trotters Grand Prix, Boulouparis Race Track 10.15 a.m. to 4.15 p.m. Tel. 25 47 11 / 25 47 29

Sat. 23 and Sun. 24 August
Kayak and whale watching excursion

Exploring the coast in kayaks, camping and whale watching from Cap N'doua, which affords a panoramic view over the whole southern lagoon. Qualified guide. Aventure Pulsion, F10,000 for 2 days. Tel. 26 27 48

Sun. 24 August
Kayak

Take to a seagoing kayak at South Prony to explore Carrénage Bay and the hot water springs. Wide open spaces, picnic and bathing, Aventure Pulsion, F5,750 Tel. 26 27 48

Kayak

Great 2 1/2 to 3 hr kayak trail incl. barbecue, via the mangroves in the Tontouta estuary to the Tomo boat launch. Terraventure, F 5,870 Tel. 77 88 19

Thu. 28 August
Theme evening

'Bouagna' evening, Hotel Kodjeue, Isle of Pines, from 7 p.m. Tel. 46 11 42

Till 30 August
Art exhibition

Exhibition of works by the New Caledonian painter Stéphane Foucaud in the Mont Dore Cultural Centre Exhibition Hall, Mon. to Thu. 8 a.m. to 4 p.m., entrance free Tel. 41 90 90

North Province

Fri. 22 August
Theme evening

Latino Buffet in the Tiéti Tera Beach Resort from 7 p.m. F4,900. Tel. 42 64 00

Loyalty Islands

Ouvea

Weds. 27 August
Market

Hnyinèhè market by the sea (between Banour and Wadrilla), 7 a.m. to 5 p.m.

Maré

Fri. 22 and Tues. 26 August
Market

In Tadine, opposite the Town Hall Shelter, 6 a.m. to 5 p.m.

Lifou



Fri. 22 and Weds. 27 August
Market

In Wé, 6 a.m. to 11 a.m.

Wed. 27 August
Dance

'Sweet Hô'm' Hip hop dance show, featuring Soufiane Karim and DJ SE, with the theme of journeys and meetings. Le Chapitô, Lifou, 8 p.m. Tel. 27 56 36 / 84 01 05

Later

Sat 30 August to end September
Culture

Throughout September, New Caledonia will be holding events to celebrate her cultural heritage. The theme will be 'Rediscovered Gestures'. Tel. 25 81 22

12 and 13 September
Annual Sound and light show - Fort Teremba

An unforgettable evening watching the past brought to life in a breathtaking setting. Find out more about New Caledonia's history. Tel. 44 32 71

13 to 19 September
Sailing

Groupama Race, 1st Round New Caledonia Yacht Race Tel. 26 27 27

From 30 September to 6 October
Festival

Femmes Funk festival. International and local musicians meet to offer the public a unique melting pot of concerts. Tel. 41 45 45

Download it for **FREE!** **EVERY FRIDAY!**

The New Caledonia **Weekly**

Even if you missed the boat, don't miss hearing about **New Caledonia!**

www.newcaledonia.com.au
www.newcaledonia.co.nz
www.office-tourisme.nc

History

A touch of Japan

New Caledonia's population is a melting pot of different ethnic communities. The well-integrated Japanese community adds its own distinctive touch to the atmosphere of cultural diversity.

The first Japanese settlers arrived in New Caledonia in 1892. Many came to work as miners, farmers or small traders. At the start of World War II, New Caledonia expected to be crushed by the might of the Japanese armed

forces. Many of New Caledonia's Japanese inhabitants were arrested and shipped off to Australia before being repatriated to Japan. However, as we now know, it was the Americans who arrived first and claimed New Caledonia as an allied base. New Caledonia and Japan never clashed in battle.

New Caledonia now has a community of around 8,000 Japanese residents, living in perfect harmony with all the country's other communities. And many Japanese visitors flock to New Caledonia in search of sun, exotic surroundings and the beauties of unspoilt nature. Some even come here specially to get married!

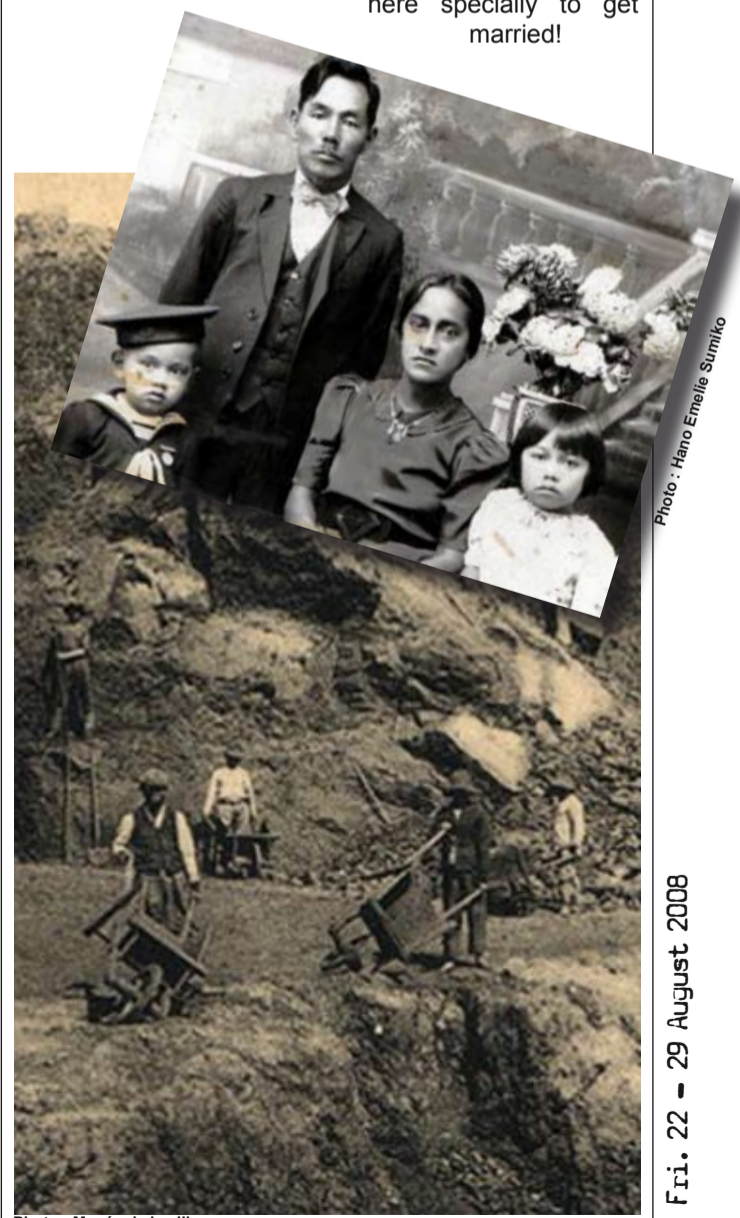


Photo : Musée de la ville

Photo : Hano Emelie Sumiko

Life Style

Fresh air

The 3 Bays Trail

Take a trip 200 km north of Noumea and explore the glorious countryside around Bourail, with its mountains, prairies and white sand beaches lapped by the sparkling waters of the lagoon.

Follow the 3 Bays Trail (sentier des 3 baies) and discover the unique beauty of the bays on the coast near Bourail. The route winds along the coastline, offering breathtaking views of the lagoon and taking in many of New Caledonia's incredible variety of natural habitats and plant species: column pines, dry forest... The trail starts in Pierced Rock Bay (baie de la roche percée), where you have



an excellent view of the famous 'Bonhomme' (Old Man), a nickname inspired by the shape of this lone rock standing out from the foot of the cliff. Next you come to Turtle Bay (baie des tortues), edged with proud column pines and often frequented by turtles. The trail ends in Lovers' Bay (baie des amoureux), a peaceful haven of beauty surrounded by lush tropical greenery.

Access: Roche Percée car park, Bourail
4.2 km trail taking 2 ½ hours.

Level: easy
Tourism Office: 28.75.80 or 05.75.80 (freephone)



Caledonian taste

Ginger it up!



Ginger is a tropical plant with strongly perfumed leaves whose roots are used in numerous dishes around the world for their exceptional and unique aromatic properties.

Its distinctive fragrance can be perceived even amongst the other spices and herbs to be found in Noumea's fruit market. Ginger, whether marinated, preserved, grated or powdered, is great for refreshing the breath and improving the digestion. It is also celebrated for its aphrodisiac properties.

Recipe idea:

Chilled mango and ginger drink: 200g pineapple juice, 200g mango, 110g orange juice, 3.5g ginger, 20g vanilla. Squeeze oranges and grate skins. Peel and cut up mango. Mix orange and pineapple juice, pieces of mango, peeled fresh ginger and vanilla. Serve very chilled.

Warm sashimi with ginger sauce: 150g fresh salmon fillet, 150g fresh tuna, juice of half a lemon, 3 tbsp. olive oil, 2 tbsp. soy sauce and 10g grated fresh ginger.

Slice fresh fish into thin strips and roll into little tubes. Mix soy sauce, ginger, lemon juice and olive oil in a pan. Heat gently for 2 mins, stirring well. Pour sauce over fish. Serve warm.



Inside story



During its 40 year run, 1934 to 1974, Walkabout, Australia's answer to the U.S. National Geographic Magazine, featured many articles covering South Pacific destinations including New Caledonia. These early records by travel writers are now being translated into French for inclusion in the quarterly New Caledonia Historical Society Bulletin. The first translation appeared in Bulletin N° 156 and was written by Stephen Henty for the 1st November 1935 Walkabout issue. It is fascinating to read how Noumea was perceived by a travel writer 70 years ago, how he discovered the strangeness of this remote French outpost, yet so close to Australia. How Australian visitors could enjoy meeting our kaleidoscopic population mix, enjoy practising their French and enjoy the local variety of French regional cuisine. Fortunately, 50 odd years later, this is still the case and frequent air services from Brisbane & Sydney provide easy access to our 'Land of Eternal Spring'.

Max Shekleton
Honorary British Consul - Nouméa

Passport

Urban stewards

There are six urban stewards in Noumea, they are former athletes, who speak reasonable English and are trained to help and assist members of the public. In their beige uniforms, they have a number of tasks and duties to perform. They give directions and assistance to shopkeepers, inhabitants and passers-by in downtown Noumea and provide backup for organisers of public events and entertainments. They work in teams, patrolling the streets on foot or on bikes, providing a community service by replying to queries and requests for help. Visitors may also ask Noumea's red-uniformed information stewards for help and directions. Their brief is to welcome boats and tourists and provide assistance, advice and information.

Urban Stewards: 8 a.m. to 7 p.m. Mondays to Fridays and 8 a.m. to 1 p.m. Saturdays
Tel. 94 00 64

Experience

A milk shake from heaven

If you take the road to the South, you'll find a delightful gourmet treat just 10kms from Noumea. The Saint Louis farm stands at the entrance to the tribal village of Saint Louis, which takes its name from the charming missionary church built in 1860. On the road, you'll probably come across a few cows from the farm going for a gentle jaunt around the environs. Make sure you stop and sample



some of the delicious farm products: fresh fruit, jams, yoghurt, cakes... And whatever you do, don't miss the house speciality; fresh milkshakes whipped together with chocolate, caramel, passionfruit, coconut... just take your pick!

Tel. 43 54 82

Travel Kit

Money	1 AUD =	1 NZD =	1 USD =
(exchange rates on 21 st August 2008).	70,67 XPF	55,69 XPF	80,97 XPF

Automatic teller machines (ATMs) are available throughout the territory. Have your pin code handy, so as to be able to use your credit card. Banks are generally open 8 a.m. to 3.30 p.m., Monday to Friday.

Take a bus

Karua buses (red buses): the Blue Line goes to the Tjibaou Cultural Centre from the Place des Cocotiers in the centre of town. The Green Line follows the beach roads.

Fares: adults, F200 one way. Tickets can be bought on board the bus or over the counter at the Place des Cocotiers. Buses run approximately every 20 minutes during the week and every 30 minutes at weekends, Tel. 26 54 54 or www.gietcn.nc

Noumea Explorer (Noumea tour, hop on - hop off): Tuesday to Sunday with a bus every hour. Day pass Adult, F1,000, children (aged 2-12) F500, buy tickets on the bus, Tel. 27 19 80 or www.arcenciel-voyages.nc

Alpha Bus Pass (Noumea tour, hop on - hop off): Tuesday to Sunday with 3 buses a day. Day pass available on the bus: Adult F1,000, children (aged 2-12) F500. Stops at the hotels, Tel. 27 24 20 www.alpha-tourisme.com

Take a taxi

Taxis, Central rank - Place des Cocotiers, Fare from city centre to beaches, F1,000. Tel. 28 35 12

PASS¹
NATURE & CULTURE

1 PASS → 6 LIEUX
1 PASS → 6 PLACES

1 PASS 6 LIEUX 1 PASS 6 PLACES

Logos of partner organizations: Tjibaou, Office du Tourisme, etc.

Useful numbers

NC country code: +687

NC Tourist office:
05 75 80 (free call)
28 75 80

Australian Consulate - General:
27 24 14

New Zealand Consulate - General:
27 25 43

Air Caledonie (domestic flights):
25 21 77

Aircalin : 26 55 00

Qantas: 28 65 46

Air New Zealand:

28 66 77

Police: 17

Fire brigade: 18

Emergencies /

SOS Medical service: 15

Directory enquiries: 1012

Noumea weather

Friday 22	25°	Mostly Cloudy
Saturday 23	22°	Rainy
Sunday 24	23°	Mostly Cloudy
Monday 25	22°	Mostly Cloudy
Tuesday 26	22°	Cloudy
Wednesday 27	24°	Rainy
Thursday 28	25°	Mostly Cloudy

Editor: On En Parle!
tel. (687) 23 23 80
onenparle@onenparle.nc
Editorial Committee:
Tourism office ;
Photos: Tourism office,
NC Tourism Point Sud; Tourism
Province Nord, Destination Iles
Loyauté
Translations: Catalyst
Tel/Fax (687) 28 88 33
Printed by IRN Nouméa,
tel. (687) 26 26 11
Despite the attention given to the accuracy of the information printed in The New Caledonia Weekly, we cannot be held responsible for last minute changes in program or prices.

We protect our Island.



Contact us

We would like to hear any comments regarding *The New Caledonia Weekly*, please write to us at:
weekly@onenparle.nc

